

Get into the World of General Tire

The powerful Van tyre.

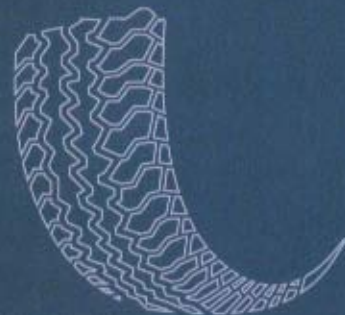
EUROVAN



Built to meet the toughest demands of powerful US vehicles, optimised to European road conditions through a combination of flat belt technology and tread design, the Eurovan ensures high mileage performance, real security and powerful traction!

Vehicle Examples

CITROEN	OPEL
FIAT	PEUGEOT
FORD	RENAULT
MERCEDES	TOYOTA
NISSAN	VOLKSWAGEN



EUROVAN – The guarantee for top performance

The tread pattern is characterised by a combination of two centre siped tread bands with wide shoulder blocks and three broad drainage channels that give the tyre its top performance and impressive rigidity.



Three drainage channels

Wide shoulder block

Multiple tread sipes

Center tread bands



Features

- 1 Three drainage channels
- 2 Multiple tread sipes
- 3 Wide shoulder blocks
- 4 Centre tread bands
- 5 Wide flat belt tread profile ensuring flat and wider contact patch
- 6 Steel belted casing with high impact resistance

Benefits

- 1 Excellent water dispersion from the contact patch ensuring top wet performance
- 2 Low noise levels and break up of water surface tension
- 3 Improved handling under load
- 4 Better steering and stability
- 5 Smoother, more comfortable ride and higher mileage
- 6 Greater rigidity and strength

PATTERN	RIM DIA-METER	SIZE	PR	SERVICE DESCRIPTION ¹⁾	RIMS	TL VALVE (TUBE AND VALVE) ²⁾	LOAD INDEX	WHEEL POSITION ³⁾	LOAD CAPACITY (KG) PER AXLE AT TIRE PRESSURE (BAR)								SPEED INDEX AND REFERENCE SPEED (KM/H)
									3.0	3.25	3.5	3.75	4.0	4.25	4.5	4.75	
EUROVAN	14"	185 R 14 C	8	102/100 Q	5 J	43 GS 11.5	102	E	1230	1310	1390	1470	1545	1625	1700	Q 160	
					5 1/2 J		100	Zw	2315	2465	2620	2765	2915	3060	3200		
					6 J												
		195 R 14 C	8	106/104 Q	5 J	43 GS 11.5	106	E	1375	1465	1555	1645	1730	1815	1900	Q 160	
					5 1/2 J		104	Zw	2605	2775	2945	3110	3275	3440	3600		
					6 J												
	165/70 R 14 C	6	89/87 R	4 1/2 J	43 GS 11.5	89	E	970	1035	1100	1160				R 170		
				5 J		87	Zw	1825	1945	2065	2180						
				5 J	43 GS 11.5	90	E	1005	1070	1135	1200						
	175/65 R 14 C	6	90/88 T	5 1/2 J		88	Zw	1875	2000	2120	2240				T 190		
				5 J	43 GS 11.5	104	E	1300	1385	1470	1555	1640	1720	1800			
				5 J		102	Zw	2460	2620	2780	2940	3095	3250	3400			
15"	195/70 R 15 C	8	104/102 R	6 J	43 GS 11.5	112	E	1620	1725	1830	1935	2040	2140	2240	R 170		
				6 1/2 J		110	Zw	3065	3270	3470	3665	3860	4050	4240			
				7 J													
	225/70 R 15 C	8	112/110 R	6 J	43 GS 11.5	112	E	1620	1725	1830	1935	2040	2140	2240	R 170		
				6 1/2 J		110	Zw	3065	3270	3470	3665	3860	4050	4240			
				7 J													
16"	175/75 R 16 C	8	101/99 R	4 1/2 J	TR 600 XHP,	101	E	1140	1215	1290	1360	1435	1505	1575	1650	R 170	
				5 J	TR 602 HP	99	Zw	2145	2290	2430	2565	2700	2835	2970	3100		
				5 1/2 J													
	195/75 R 16 C	8	107/105 R	5 J	TR 600 XHP,	107	E	1350	1440	1525	1615	1700	1785	1865	1950	R 170	
				5 1/2 J	TR 602 HP	105	Zw	2560	2730	2900	3060	3225	3385	3545	3700		
				6 J													

¹⁾ Load Index single/twin fitment and Speed Index

²⁾ 43 GS 11.5 max. 4.5 bar; TR 600 XHP, TR 602 HP (ETRTO V3.23.1+2) max. 5.5 bar

³⁾ S = Single, T = Twin